

SRB

Instrukcije za povezivanje priključnice RJ45 kat. 5E i kat. 6 sa konektorom AVE:

44..027C5E (nije širmovana)
44..027C6 (nije širmovana)

Pločica za obeležavanje priključnice



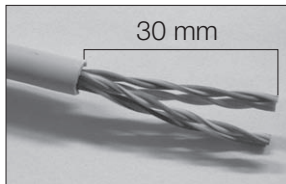
Customizable label

GB

Connection instructions for RJ45 socket cat. 5 Enhanced and cat.6 with AVE connector:

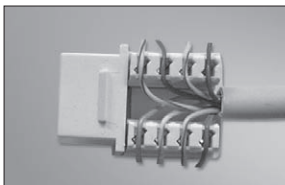
44..027C5E (unshielded version)
44..027C6 (unshielded version)

- 1) Skinuti oko 30 mm izolacije i razdvojiti 4 para žica.



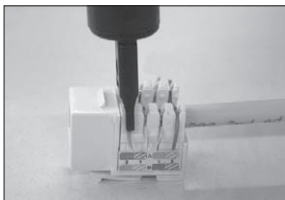
- 1) Strip approximately 30mm of the cable jacket and separate to 4 pair each.

- 2) Sledite instrukcije za raspored žica prema grafičkoj šemi koja se nalazi na bočnoj etiketi konektora, prema odabranom tipu povezivanja (T568A ili T568B); napravite malo rastojanje na odgovarajućem mestu i postavite parove žica u svaki otvor.

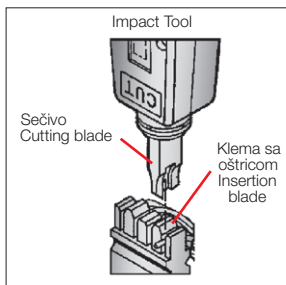


- 2) Follow the direction on the color-coding sticker to position T568A or T568B wiring, separate a little space on proper position and insert the wire pair by pair into each slot.

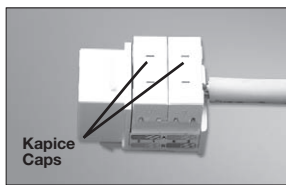
- 3) Pomoću odgovarajućeg alata pritisnite i isecite svaki provodnik; uklonite eventualne ostatke od provodnika.



- 3) Use the proper tool to press and cut off each conductor; remove eventual shreds of the conductor.

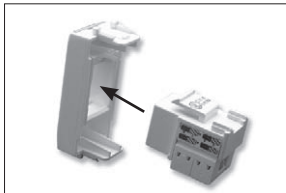


4) Postavite kapice za pričvršćivanje žica



4) Insert the caps to fix these wires.

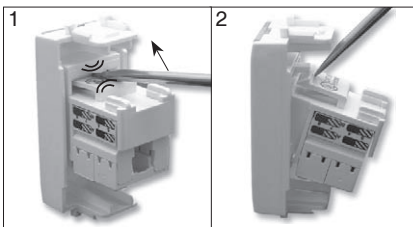
5) Pre montaže zakačite konektor za adapter sa zadnje strane



5) Hook the connector to the cover before in the lower part.

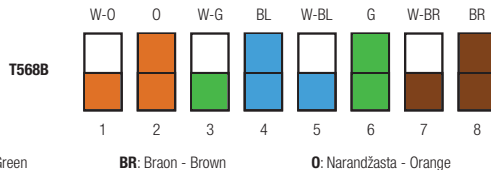
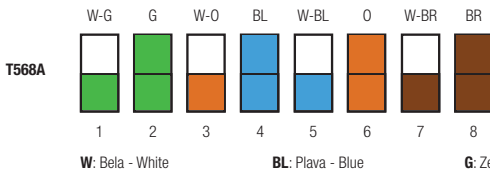
SKIDANJE KONEKTORA SA ADAPTERA

RELEASE THE CONNECTOR FROM THE COVER



BOJE PROVDNIKA KOJE VAŽE ZA OBE PRIKLJUČNICE

COLORS OF CONDUCTORS VALID FOR BOTH SOCKETS



C.525 - 04 - 020712

VAŽNE NAPOMENE:

- Proizvode treba prodavati u originalnom pakovanju. U suprotnom, prodavac i/ili instalater su dužni da obezbede i uruče korisniku uputstva koja se originalno isporučuju sa proizvodom i/ili su objavljena na www.ave.it i u važećem komercijalnom katalogu.
- AVE proizvodi su namenjeni za elektroinstalaciju.
- Proizvode mora instalirati stručno, profesionalno osoblje u skladu sa uputstvima za instalaciju.
- Nakon što se proizvod otpakuje treba proveriti njegovu ispravnost, a ukoliko postoji sumnja u njegovu ispravnost, uređaj ne treba koristiti već se treba obratiti prodavcu (stručnom osoblju).
- Uredajem treba pažljivo rukovati čak i dok je u originalnom pakovanju i treba ga čuvati na suvom mestu na temperaturi između -5°C i $+40^{\circ}\text{C}$.
- Pre nego što započnete instalaciju uređaja, pomoću glavnog osigurača isključite napajanje.
- Posebnu pažnju treba obratiti na pripremu završnih kontakata na kablovima koje treba povezati na priključke uređaja kako bi se osigurala odgovarajuća izolacija između samih kontakata.
- Pažljivo zategnite klemu kako biste izbegli pregrevanje koje bi moglo da uzrokuje požar ili oštećenje kablova i uređaja.
- Proizvod je namenjen za upotrebu na suvim mestima bez prašine.
- Za upotrebu u specifičnim uslovima koristiti prikladne proizvode.
- Postoji opasnost od strujnog udara ili kvara uređaja ukoliko se njime rukuje nepravilno.
- Proizvod i njegovu prateću opremu treba instalirati u skladu sa preporukama iz uputstava i iz kataloga, kao i u skladu sa odgovarajućim zakonima i propisima.
- Garantni list za konkretan proizvod, u kome se navode period i uslovi garancije u skladu sa lokalnim pozitivnim propisima, izdaje prodavac u trenutku prodaje proizvoda

Garancija proizvođača: Garancija od 5 godina se primenjuje isključivo za oštećenja ili neispravnost proizvoda nastale nepažnjom proizvođača, imajući u vidu prava i obaveze koje proizilaze iz važećih pravnih odredbi (čl.1490, 1512 C.C., DL 24/2002, Odredba 1999/44/CE, čl. 1519 C.C.). Kvar mora biti prijavljen u roku od dva meseca od njegovog otkrivanja. Period od 5 godina počinje da se računa od trenutka prodaje proizvoda krajnjem kupcu.

IMPORTANT NOTES:

- Products should be sold in their original packaging. Otherwise, the retailer and/or installer is obliged to follow, as well as to communicate to the user, the instructions for use which are supplied with the product and/or are published on the website www.ave.it as well as in the current product catalog.
- AVE products are installation products
- Products must be installed by trained professionals in compliance with the installation regulations
- Once the product is unpacked, make sure that the appliance is undamaged. Do not use the appliance if there is any doubt, but contact a qualified technician
- Even before unpacking, the appliance should be handled with care and stored in a dry place at temperatures between -5°C and $+40^{\circ}\text{C}$
- Before carrying out any maintenance on the appliance, cut off the mains power
- Special attention should be paid to the preparation of the cable terminals to be inserted into the appliance terminals so as to maintain sufficient isolation distance between contacts
- When tightening the terminal screws, special care should be taken to avoid overheating which could start a fire or damage the cables.
- The product must be used in dry, dust-free areas
- Suitable products must be used in any other conditions
- There is a risk of electric shock or malfunction of the device if not handled properly.
- Install products and accessories according to the prescriptions in the catalogue and the instructions sheet and in compliance with specific standards and rules
- Warranty certificate for a specific product, which specifies the warranty period and conditions in accordance with local regulations, is issued by the seller at the moment of sale of product

The manufacturer's warranty: The 5 year warranty applies only to damaged or malfunctioning products caused by manufacturer's negligence, taking into account the rights and obligations prescribed by law (art. 1490, 1512 C.C., DL 24/2002, Directive 1999/44/CE, art. 1519 C.C.). The defect must be notified within 2 month from the date it was discovered. Five years are intended from the date of delivery of the product to the final customer.

